

# IoTEmeter SP Series

Cellular-connected energy metering device with built-in power reboot control, designed for high-power systems.



The IoTEmeter SP Series is built for teams that need real-time energy visibility and the ability to remotely reboot power when equipment goes down. With cellular connectivity, the SP Series installs without Wi-Fi or IT involvement and delivers accurate power metering and remote control through the Smart Telemetrics dashboard — from anywhere. Whether you're supporting charging infrastructure, industrial equipment, or critical power systems, the SP Series helps you respond faster, reduce downtime, and eliminate unnecessary service calls. And when energy reporting matters, such as a rebate program, the data is already there.



## Integrated Energy Metering

Measure and log kWh consumption, monitor real-time energy usage, and access energy data remotely.



## Remote Power Reboot

Instantly reboot or shut off high-powered equipment through our mobile or web-based cloud app.



## Integrated Wireless Cellular Connectivity

Built-in cellular connectivity means reliable access anywhere, without site Wi-Fi or IT involvement.

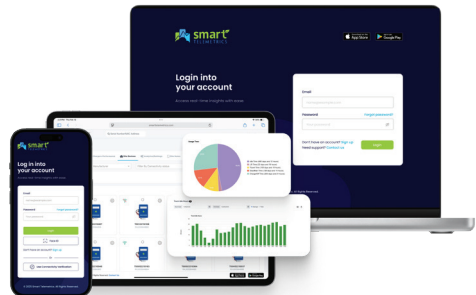


## Cloud Integration

Seamlessly transmit real-time data to the Smart Telemetrics cloud for continuous monitoring and analysis.

## How It Works with the Smart Telemetrics App

Monitor energy usage and manage equipment through a cloud-based dashboard or mobile app. Schedule power actions, receive alerts for critical events, and review activity history while maintaining full visibility and control from any location.



	SP-1 Model	SP-3 Model
<b>AC Ratings (Contactor):</b>		
<b>Voltage Rating:</b>	208/240VAC, 50/60Hz	480VAC, 50/60Hz
<b>Current Rating:</b>	40A (50A resistive)	40A (50A resistive)
<b>Number of Poles:</b>	Two	Three
<b>Power Pole Terminations:</b>	Screw Terminal Block - Up to 6AWG	Screw Terminal Block - Up to 6AWG
<b>Optional Accessories:</b>		
<b>Dry Contacts:</b>	One	One
<b>Temperature/Humidity Sensor Port:</b>	Optional	Optional
<b>Internal Backup Battery:</b>		
<b>Battery Chemistry:</b>	Li-Polymer Battery	Li-Polymer Battery
<b>Battery Voltage /Capacity:</b>	~3.7V / 3200mAh (UL)	~3.7V / 3200mAh (UL)
<b>ETL/cETL:</b>	UL1642, IEC62133(CB)	UL1642, IEC62133(CB)
<b>Connectivity/ Cloud:</b>		
<b>Cell:</b>	LTE Cat 1	LTE Cat 1
<b>Cloud Connectivity:</b>	3-Year Cloud Access & Alerts	3-Year Cloud Access & Alerts
<b>Safety Compliance:</b>		
<b>ETL/cETL:</b>	DTM UL 60950-1 (ITE Safety)	DTM UL 60950-1 (ITE Safety)
<b>FCC:</b>	DTM FCC Title 47 CFR 15B, Class A	DTM FCC Title 47 CFR 15B, Class A
<b>CE:</b>	DTM CE	DTM CE
<b>ROHS:</b>	Compliant	Compliant
<b>Mechanical:</b>		
<b>WxDxH:</b>	8.33" x 6.36" x 3.94"	8.33" x 6.36" x 3.94"
<b>Flammability Rating:</b>	UL94-5VA	UL94-5VA
<b>Indoor/Outdoor:</b>	Outdoor (UV Stabilized)	Outdoor (UV Stabilized)
<b>IP Rating:</b>	IP66	IP66